

KEY NOTES: XX.XX

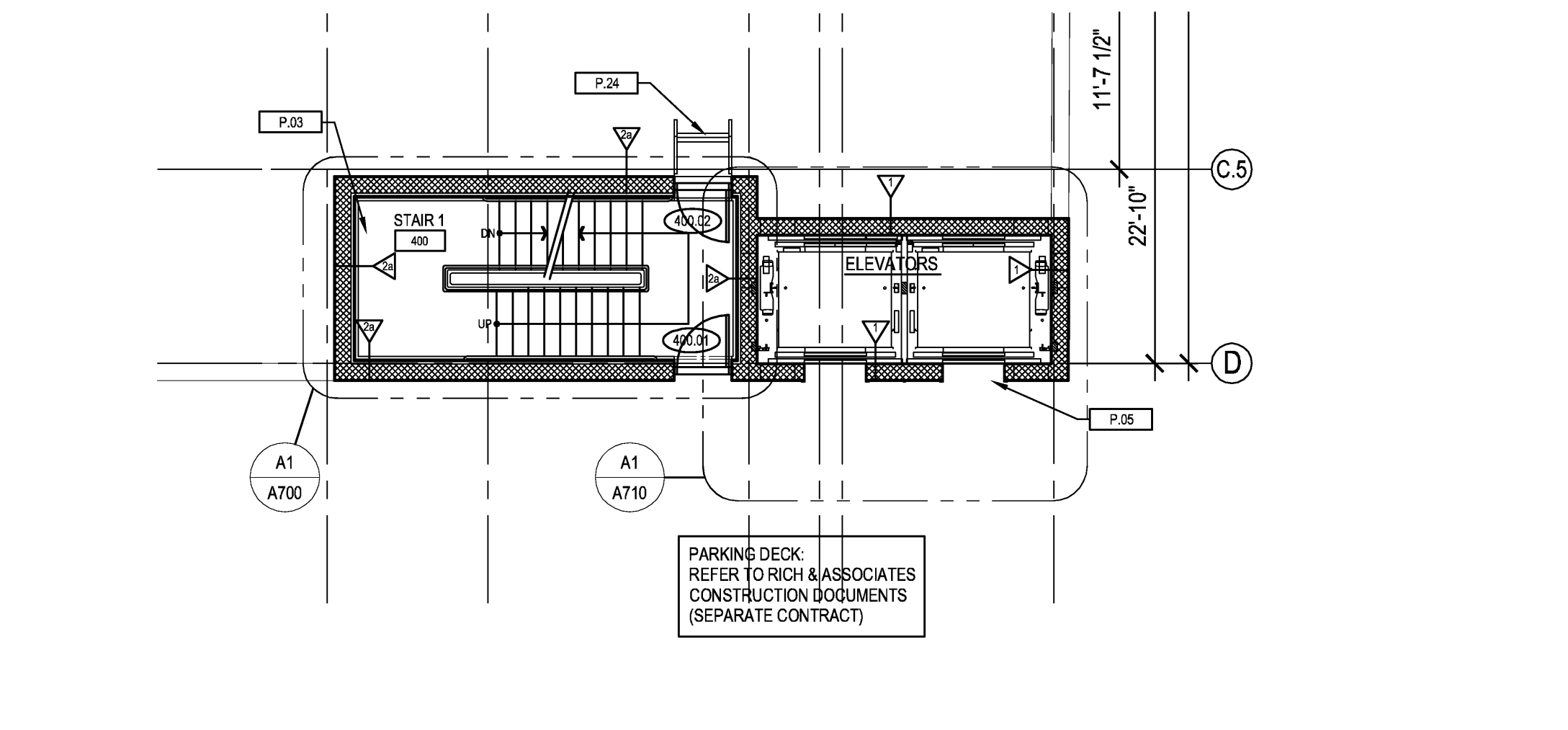
- P.01 PREFINISHED ALUMINUM/INSULATED GLASS CURTAIN WALL SYSTEM.
- P.02 PREFINISHED ALUMINUM/INSULATED GLASS STOREFRONT SYSTEM.
- P.03 STEEL STAIRS/LANDINGS/RAILINGS W/ CONCRETE TREADS AND LANDINGS
- P.04 INFILL OPENING W/ 8" NOM. CMU.
- P.05 EXPANSION JOINT AT LANDING.
- P.06 RAMP: REINFORCED CONCRETE SLAB ON RIGID EXTRUDED POLYSTYRENE, OVER STRUCTURAL FLOOR DECK.
- P.07 STEEL CANOPY W/ LAMINATED ART GLASS CEILING.
- P.08 STEEL/LAMINATED ART GLASS CEILING AT VESTIBULE BELOW W/ INTEGRATED LIGHTING.
- P.09 INFILL SHAFTWAY OPENING W/ WOOD FRAMING AND PLYWOOD DECK.
- P.10 ALUMINUM CLAD WOOD WINDOW.
- P.11 NEW OR MODIFIED MASONRY OPENING FOR DOOR/WINDOW.
- P.12 INFILL EXISTING MASONRY OPENING W/ BRICK TO MATCH EXISTING ADJACENT.
- P.13 PREFINISHED ALUMINUM FLASHING OVER RESTORED CORNICE.
- P.14 NEW WOOD/GLASS STOREFRONT SYSTEM.
- P.15 NEW MTL DOOR AND FRAME IN EXISTING MASONRY OPENING.
- P.16 NEW WOOD/GLASS DOOR AND FRAME IN EXISTING MASONRY OPENING.
- P.17 INFILL EXISTING MASONRY OPENING W/ CMU.
- P.18 NEW STEEL LINTEL AT EXISTING MASONRY OPENING.
- P.19 STEEL COLUMNS ON CONCRETE FOOTING.
- P.20 CONCRETE SLAB ON GRADE.
- P.21 CONCRETE COMPOSITE DECK.
- P.22 WALL MOUNTED SECURE MAILBOXES
- P.23 ORNAMENTAL STEEL SECURITY GATE W/ PEDESTRIAN EGRESS TURNSTILE
- P.24 PREFABRICATED METAL STAIR
- P.25 SCREED CONCRETE SLAB TO FINISHED THRESHOLD ELEVATION (T.G.)
- P.26 PROVIDE FRAMED ROUGH OPENING FOR FUTURE DOOR INFILL WITH MTL FRAMING AND FINISH TO MATCH ADJACENT WALLS
- P.27 MAINTAIN 2 HOUR FIRE RATING AT FLOOR ASSEMBLY, THIS AREA

GENERAL NOTES:

- A. REFER TO LIFE SAFETY DRAWINGS (LS100-LS102) FOR LOCATION OF FIRE RATED WALLS

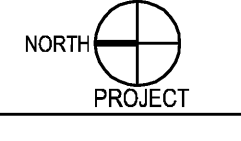
E1 THIRD FLOOR PLAN

A103 1/8" = 1'-0" REFERRED FROM:



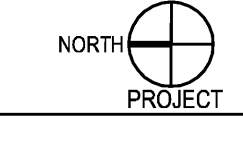
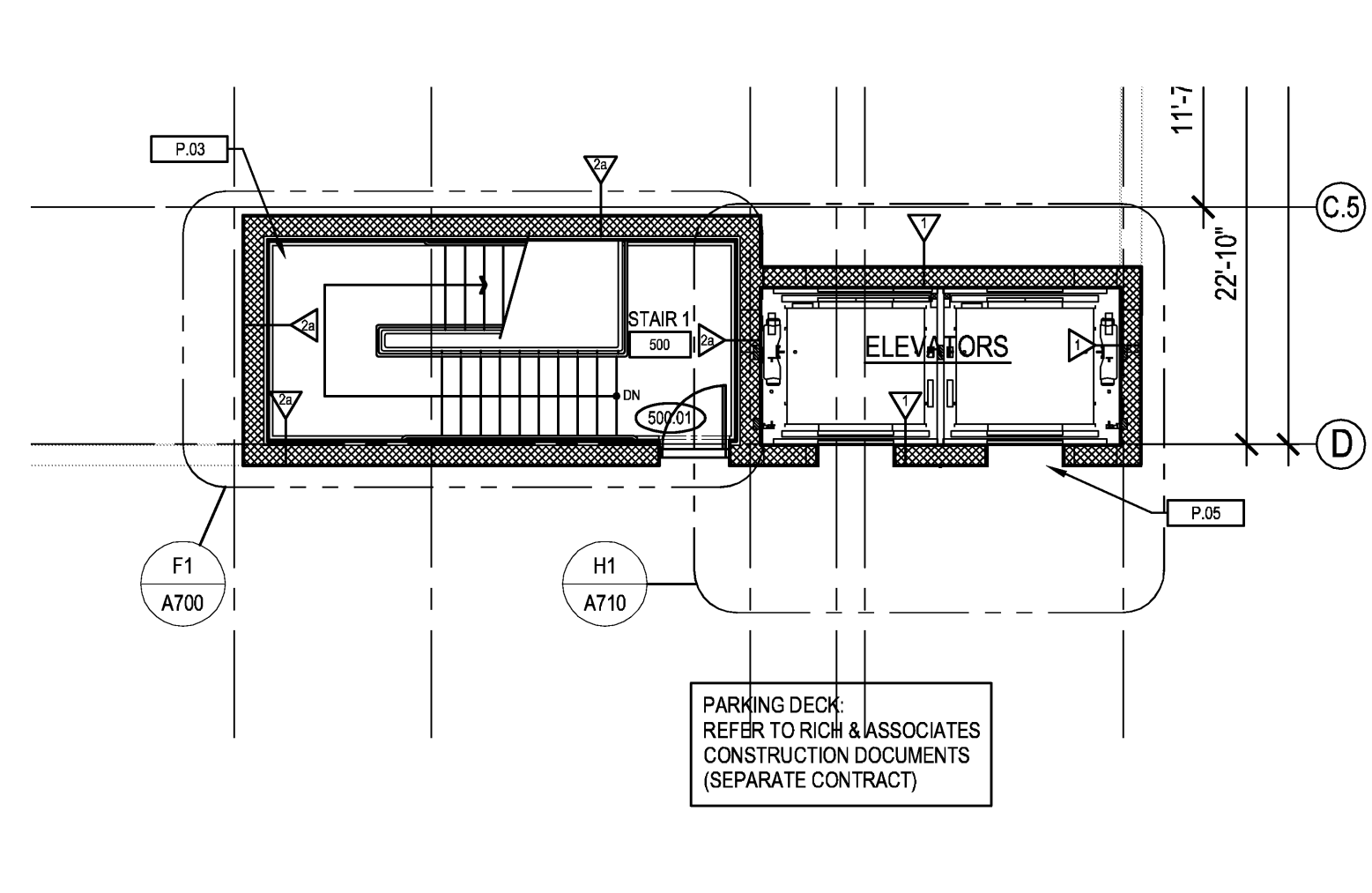
A1 FOURTH FLOOR PLAN

A103 1/8" = 1'-0" REFERRED FROM:



A9 FIFTH FLOOR PLAN

A103 1/8" = 1'-0" REFERRED FROM:



QUINN EVANS ARCHITECTS

219 1/2 N Main Street
Ann Arbor, Michigan 48104
734 663 5888 f 734 663 5044
www.quinnevans.com

Woodward Garden Building 2

Detroit, Michigan
QE|A No. 06146.03

Third, Fourth and Fifth Floor Plans

NO.	TITLE	DATE
	BIDDING	05/16/08

FILE NAME: A103

A103